

OSHER
LIFELONG
LEARNING
INSTITUTE



The Place Where
Curiosity Never Retires

2012 Winter Courses and Activities

February 13–
March 23, 2012

About OLLI	Page 2
Course Offerings	Page 3-10
Bus Trips	Page 12
Special Events	Page 12
Membership/Registration	Pages 13-14
Course Schedule	Page 15

OLLI at Penn State York

717-771-4015
olli@yk.psu.edu

1031 Edgecomb Avenue
York, PA 17403

olli.yk.psu.edu

PENNSTATE



York

Deadline for Winter 2012
Course Registration
Friday, February 3, 2012



ABOUT OSHER LIFELONG LEARNING INSTITUTE AT PENN STATE YORK

Founders of the Lifelong Learning Institute (OLLI) at Penn State York

Through the efforts of three like-minded women (clockwise from left, Charmain Kissinger, Olive Padden and the late Gussie Petron) and a number of other volunteers, the Osher Lifelong Learning Institute (OLLI) initiated an association with Penn State York. In 2007, a nonprofit, all volunteer-driven organization was established to enrich the lives of mature adults living in York County by providing a variety of educational and social activities. Classes began in April 2008. OLLI celebrates learning in a relaxed and accepting environment. We are one of more than 400 lifelong learning institutes across the nation that are partially supported by a grant from the Bernard Osher Foundation.



How does OLLI at Penn State York work?

OLLI at Penn State York is a membership organization. Members may participate in any of the OLLI activities, which include courses and special events. OLLI activities usually take place during the day. While most of the classes take place on the Penn State York campus; trips outside the classroom are scheduled to enhance our members' search of never ending learning experiences. Classes are intended for pure enjoyment, and there are no requirements, exams, or grades. All activities are designed by members for members.

Registration Requirements

Prior registration is required for all classes. There will be no walk-ins. This will enable us to schedule the room (size) and tell the presenter how many students to prepare for if they have handouts. This could also prevent cancellations due to low enrollment.

If You are Unable to Attend a Course

Refunds will be in the form of credit only, no cash. Credit will be given only if you call the office at least one week before the start of the course. Call the OLLI office at 717-771-4015 to receive credit or if you have further questions.

What are the fees for OLLI at Penn State York?

Because OLLI at Penn State York is largely volunteer-run, the fees are kept low. Membership dues are \$50 per year and are required for courses. **Bus trips and single-session courses are open to nonmembers. There is an additional charge for nonmembers, \$5 extra for single-session courses and \$10 extra for bus trips.** Courses are \$20 each for five and six-session courses, \$15 for three and four-session courses, and \$5 for two-session courses. Single-session courses are \$5 each for members (\$10 for nonmembers). Bus trips cost from \$40 to \$75.

How can I join OLLI at Penn State York?

Simply fill out the membership form inside this brochure, mail it to Penn State York with your payment, and begin OLLI activities at any time. For more information, contact OLLI at 717-771-4015 or e-mail olli@yk.psu.edu.

Always looking...

Do you or someone you know have a special interest or talent to share with OLLI members? The Curriculum Committee is always searching for course ideas. Please contact the OLLI office at 717-771-4015.

Deadline for winter 2012 course registrations: February 3, 2012

OSHER LIFELONG LEARNING INSTITUTE AT PENN STATE YORK

WINTER 2012 FEBRUARY 13 - MARCH 23, 2012 COURSES

MONDAY CLASSES

CLASS LOCATIONS:

CC – Penn State York Conference Center
RAB – John J. Romano Administration Building
MCB – Main Classroom Building
PAC – Pullo Family Performing Arts Center
YAC – York Alliance Church
(501 Rathton Road, York, PA 17403)

The Hills are Alive with the Sound of Music

(maximum 15)

Mondays, 9:00–10:30 a.m. (CC)

February 13, 20, 27; and

March 5 (**four-session**

course) Price: \$15 members only

Description: Rev. Lou Ann Jones will begin with exploring the basics of music. The second session will focus on hymns. You will sing favorites and learn some hymn histories. The third session will look at oldies but goodies and how these songs have touched our lives. The fourth session will look at how the Disney Corporation and others have influenced the music of younger generations.

Presenter: Lou Ann Jones is a minister and choir director for her church, as well as an organist.

Geology of Colorado

Mondays, 11:00 a.m.–12:30 p.m. (CC)

February 13, 20, and 27 (**three-session course**) Price: \$15 members only



Description: Jeri Jones will explain how the rocks of Colorado evolved over millions of years. He will share some trivia about the Rocky Mountain state and the minerals that have

been mined there. This will be a great preview for those going on our Trains of Colorado trip.

Presenter: Jeri Jones has been studying the geology of southeastern Pennsylvania for nearly thirty years and has written numerous books and articles on the subject.

Bridges of Wrightsville: Confederate Army Comes to Wrightsville

Monday, 12:45–2:15 p.m. (CC)

February 13 (**single-session course**) Price: \$5 members/\$10 nonmembers

Description: Learn the story behind burning the bridge to stop the Confederates from getting to Columbia, Pennsylvania, during the Civil War.

Presenter: Donald Lehman is a past president of the Wrightsville Historical Society and a guide/speaker for the Burning Bridge Diorama at Wrightsville.

Investment Market Update

Mondays, 2:30–4:00 p.m. (CC)

February 13, 27; and March 12 (**three-session course, please note there will be no class on February 20 and March 5**) Price: \$15 members only

Description: This class examines current political, economic, and corporate events. You will learn how to apply these events to the markets to see how stocks, bonds, currencies, and commodities react to the daily barrage of information. Understanding these events is important because it predicts investment trends.

Presenter: Brian Broberg is a financial adviser and author.

Have you heard?

Osher Lifelong Learning Institute (OLLI) is in the process of reenergizing its Speaker's Bureau Committee. If you are interested in sharing your OLLI knowledge and enthusiasm of your experience with the program and would like to be added to our list of presenters to help spread the word to the York Area Community (would involve brief presentations to community organizations), please contact OLLI at 717-771-4015 or e-mail olli@yk.psu.edu

MONDAY CLASSES



America through the Decades: The Top 10

Mondays, 3:30–5:00 p.m. (CC)
February 13, 20, 27; March 5, 12,
and 19 (**six-session course**) **Price: \$20 members only**

Description: This course will take you through America's history decade by decade starting with 1900 and exploring the top ten things that made that time period

memorable. What were the events, who were the people, and what pop culture items made that decade stand out? Find out more by enrolling today!

Presenter: Molly Dallmeyer is a high school social studies teacher at Dallastown Area High School.

Introduction to Genealogy

(maximum 12)

Monday, 12:45–2:15 p.m. (CC)

February 20 and 24 (**two-session course, second session will take place at the York Heritage Trust library, 250 E. Market Street, on Friday, February 24, 10:00 a.m.–12:00 p.m.**) **Price: \$5 members only**

Description: Have you ever thought of researching your ancestry? Do you know how to get started? The first class will introduce you to techniques to use. The second will give you hands-on experiences at the York Heritage Trust Library.

Presenter: Becky Anstine is a member of the South Central Genealogical Society.

New Days for Codorus Creek (How Far Have We Really Come?)

Monday, 2:30–4:00 p.m. (CC)

February 20 (**single-session course**) **Price: \$5 members/\$10 nonmembers**

Description: Genevieve Ray will review the many positive changes that have occurred in the Codorus Corridor since it was devastated by Hurricane Agnes in 1972. She will identify the hurdles still remaining, and will present projects, actions, and groups now engaged in achieving "Recapture the Riverfront" ideals. While much of the course will focus on the stretch of the Codorus that lies within York County,

the presentation will also provide information on complementary efforts under way throughout the entire Codorus watershed. Time will be allotted for participants' brainstorming about improvements they would like to see in the Codorus.

Presenter: Genevieve Ray was the original Creek Freak in the post-Hurricane Agnes in 1970s. She has served as York City council member and president, and is now active in efforts to make the Codorus Creek into a true community asset.

Wanderings, Water, and Wild Places

Monday, 12:45–2:15 p.m. (CC)

February 27 (**single-session course**) **Price: \$5 members/\$10 nonmembers**

Description: During journeys around the world, Carol Figdore has been amazed at the variety of crafts people use to travel from place to place on the water.

An avid canoeist and kayaker who has paddled over 225 different rivers and streams in North America, she knows the skill and the muscle power needed to propel a personal watercraft. Travel on the water has taken Figdore to faraway places. Come, mentally zip up your life vest, climb aboard whatever imaginary vessel is needed, and wander across the world with Figdore to some unique locations.



Presenter: Carol Figdore is a retired teacher. She now lives her dream of traveling to faraway places.

Preparing for Disaster

Monday, 11:00 a.m.–12:30 p.m. (RAB)

March 5 (**single-session course**) **Price: \$5 members/\$10 nonmembers**

Description: Disasters happen! Learn how to be prepared for the possibility of a disaster and how to deal with it when it occurs. During this course you will be guided on how to make an emergency kit, develop a plan, and be informed.

Presenter: Dan M. Bowers has been a volunteer with the American Red Cross Chapter of York County for a dozen years.

MONDAY CLASSES

Advanced Genealogy

(maximum 12)

Monday, 12:45–2:15 p.m. (RAB)

March 5 and 9 (**two-session course, second session will take place at the York Heritage Trust library, 250 E. Market Street, on Friday, March 9, 10:00 a.m.–12:00 p.m.) Price: \$5 members only**)

Description: This class is designed for those who have taken Introduction to Genealogy or have some experience searching for ancestors who would like to learn more about search techniques. Emphasis will be on estate and land deed record research related to genealogy investigations. The first class will be held at Penn State and the second class will be held at the Heritage Trust Library.

Presenter: Becky Anstine is a member of the South Central Genealogical Society.

A Chemical Reaction

Monday, 2:30–5:00 p.m. (RAB)

March 5 (**single-session course**) **Price: \$5 members/\$10 nonmembers**

Description: This video is a documentary by Brett Plymale and Paul Tukey with the subtitle of *The Story of a True Green Revolution*. It tells the story of Dr. June Irwin of Hudson, Quebec who led her village to take action against a billion-dollar industry, pesticides. The battle continues to be waged today.

Presenter: Carolyn Jennerjohn is an OLLI curriculum coordinator.

Crime Prevention Strategies

Monday, 9:00–10:30 a.m. (CC)

March 12 (**single-session course**) **Price: \$5 members/\$10 nonmembers**



Description: It can be a scary world. Sgt. Brian Copenheaver can help alleviate your worries. In this course students will learn to keep themselves, their home, and personal information safe.

Presenter: Sgt. Brian Copenheaver is a law enforcement officer who specializes in crime prevention and injury prevention education.

The Second Vermont Brigade

Monday, 11:00 a.m.–12:30 p.m. (CC)

March 12 (**single-session course**) **Price: \$5 members/\$10 nonmembers**

Description: Dick Simpson reenacts his great-grandfather, Aaron Willet, as he marched on the road to Gettysburg in the 15th Vermont Regiment where they devastated the flank of Pickett's Charge.

Presenter: Dick Simpson is an active historian in Lancaster and Vermont. He is a Civil War reenactor.

Green is the Color of Life and Health

(maximum 40)

Monday, 12:45–2:15 p.m. (CC)

March 12 (**single-session course**) **Price: \$5 members/\$10 nonmembers**

Description: Grace Lefever will discuss many basic steps to follow for good health. She will tell about plants (often called weeds) that are both nutritional and medicinal.



Presenter: Grace Lefever is the founder of Sonnewald Natural Foods.

Modern Media Ethics Revisited

Monday, 11:00 a.m.–12:30 p.m. (CC)

March 19 (**single-session course**) **Price: \$5 members/\$10 nonmembers**

Description: Randy Parker will continue his October 2011 discussion on the changes the new technologies are having on the media and how we can make decisions as producers and consumers to improve the public discourse.

Presenter: Randy Parker is the managing editor of the *York Daily Record* and *Sunday News*.

**Watch our website at
olli@yk.psu.edu
as it changes.**

MONDAY CLASSES

Factory Whistles of York

Monday, 12:45–2:15 p.m. (CC)

March 19 (**single-session course**) **Price: \$5 members/\$10 nonmembers**

Description: While we still celebrate the new year with a New York Wire Factory whistle concert, the factory whistles of yesteryear played a large role in our local history. The whistles called our fathers to work and warned us about emergencies. Most were steam powered. Daniel Meckley will share this bit of history with us.

Presenter: Daniel M. Meckley has degrees from The Pennsylvania State University, Cornell, and Massachusetts Institute of Technology (MIT). He is the retired CEO of True Temper and a history buff.

How to Tell a Secret

Monday, 2:30–4:00 p.m. (CC)

March 19 (**single-session course**) **Price: \$5 members/\$10 nonmembers**

Description: It is a very secret world out there. We will examine some of the ways secrets are presented around us, from signals on a baseball diamond, hidden messages in movies, to national security, and to presidential health issues. You may never believe what you see again!

Presenter: Jim Lewin publishes popular history books in conjunction with the Smithsonian Institution by Harper Collins. He is the owner of The York Emporium and an avid collector of memorabilia.

TUESDAY CLASSES

Human Trafficking in York: Then and Now

Tuesday, 9:00–10:30 a.m. (CC)

February 14 (**single-session course**) **Price: \$5 members/\$10 nonmembers**

Description: Ashley Galloway will provide an overview of the Golden Venture story and the fight to obtain legal status for all those affected. She will then describe human trafficking, in general, the problems we are currently experiencing in York, and the efforts to combat York's human trafficking problem.

Presenter: Ashley Galloway is a practicing attorney. She has experience with immigration issues such as immigration relief, petitions, and employer compliance matters.

Spooky York

Tuesday, 11:00 a.m.–12:30 p.m. (CC)

February 14 (**single-session course**) **Price: \$5 members/\$10 nonmembers**

Description: Take a virtual ghostly tour of York, Pennsylvania to learn about myths, legends, and ghost stories that haunt this historic town. Visit ghosts at the Goodridge House or a ghost rider at Crispus Attucks, and a cigar smoking spirit at the Strand-Capitol Performing Arts Center. Scott Butcher has York's haunts for you.

Presenter: Scott Butcher is an author, photographer, historian, researcher, and marketing professional in York. He works for JDB Engineering, Inc.

Mistresses: The Girls of the Boys in the Fascist Era and Others

(maximum 35)

Tuesdays, 12:45–2:15 p.m. (CC)

February 14, 21, 28; March 6, 13, and 20 (**six-session course**) **Price: \$20 members only**

Description: Take a look at the mistresses of three fascist leaders: Adolf Hitler, Benito Mussolini, and Juan Peron. How did Eva Braun, Clara Petacci, and Eva Duarte influence these world leaders? If time permits, Frank Arcuri will add other fun couples: Eisenhower and Kay Summersby and King Edward and Wallis Simpson.



Presenter: Frank Arcuri is a practicing lawyer and a historian.

Stieg Larson's Millennium Trilogy

Tuesdays, 2:30–5:00 p.m. (CC)

February 14, 28; and March 13 (**three-session course, please note that there will not be class on February 21 and March 6**) **Price: \$15 members only**

Description: No words can adequately describe Lisbeth Salander, the central character in the *Millennium Trilogy* by Stieg Larson. You'll have to see the Swedish versions of *The Girl with the Dragon*

TUESDAY CLASSES

Tattoo, The Girl who Played with Fire, and The Girl who Kicked the Hornet's Nest to appreciate this unusual film series, read the books first if you can.

Presenter: Carolyn Jennerjohn is an OLLI curriculum cochair and avid reader.

Why All this Wild Weather?

(maximum 20)

Tuesday, 2:30–4:00 p.m. (CC)

February 21 (**single-session course**) **Price: \$5 members/\$10 nonmembers**

Description: Stephen Lentz will present a non-technical discussion of severe and unusual weather. Topics will include the possible reasons behind our record breaking winter of 2010 and the severe heat of 2011. Discussions will also include the headline grabbing topics of global warming, ozone depletion, and El Nino events.

Presenter: Stephen Lentz is an instructor in meteorology at Penn State York.

Pennsylvania Birding 101

(maximum 15)

Tuesday, 9:00–10:30 a.m. (CC)

February 28 and March 2

(two session course, second session will be a winter bird watching field trip and will take place on Friday, March 2, more details will be given in class) **Price: \$5 members only**



Description: Learn about the most common bird species found in southeastern Pennsylvania during February and March. Then take a field trip that beginner birders and experienced birders both will enjoy.

Presenter: Deuane Hoffman has been birding for more than thirty years.

WellSpan's New Surgery and Rehabilitation Hospital

Tuesday, 9:00 a.m. –10:30 a.m. (RAB)

March 6 (**single-session course**) **Price: \$5 members/\$10 nonmembers**

Description: Find out about the latest updates to the new WellSpan Surgery and Rehabilitation Hospital.

Scheduled to open in spring 2012, the new hospital will provide a specialized treatment environment for patients requiring orthopedic and spine surgery and create a seamless continuum of care for patients following their discharge from an acute care environment. This new seventy-three bed facility will specialize in orthopedic and spine elective surgeries.

Presenter: Barb Yarrish is the vice president of operations at WellSpan Surgery & Rehabilitation Hospital.

Psychology of the Criminal Mind

(maximum 35)

Tuesdays, 11:00 a.m.–12:30 p.m. (RAB)

March 6 and 13 (**two-session course**) **Price: \$5**

Description: Mary Lou Erb will discuss the psychology of the criminal mind. She will focus on profiling, different criminal activity, and the psychology of certain crimes including homicide and sexual assaults.



Presenter: Mary Lou Erb is a lawyer and professor of criminal justice and psychology at York College of Pennsylvania.

Culture and Diversity in Perspective

(maximum 20)

Tuesday, 2:30–4:00 p.m. (RAB)

March 6 (**single-session course**) **Price: \$5 members/\$10 nonmembers**

Description: Having strong cultural and religious roots from abroad while immersed in American culture requires balance and adaptability. We will discuss this role and cultural sensitivity as it relates to the ethnic and religious diversity of cultures, specifically, from the perspective of a modern-day Pakistani-American. Come with a pure heart, an open mind, and willingness for discussion! The possibility of a field trip will be discussed during the class.

Presenter: Rabyia Ahmed currently works at York College of Pennsylvania as the assistant director of Intercultural Student Life and Global Programming.

TUESDAY CLASSES

The Secret War in Laos: How Did Mines Advisory Group (MAGS) Really Die?

Tuesdays, 9:00–10:30 a.m. (CC)

March 13 and 20 (**two-session course**) **Price: \$5 members only**

Description: This course will examine clandestine military activities in Laos in 1968 and 1970. In those years, a complex web of jungle paths and primitive roads moved enemy soldiers and war supplies into South Vietnam on what was called the Ho Chi Minh Trail. Clandestine units, secret airfields, remote outposts, and non-existent bases were involved in fierce warfare where brave men died secretly under a smokescreen of lies. The information will be presented from personal experience with graphics and accurate historical reference.

Presenter: Gene Schenck was a Green Beret who was in a mercenary unit involved in the secret war in Laos.

Native American Life in the Susquehanna River Basin Region

Tuesday, 12:45–4:00 p.m. (CC)

March 20 (**two-session course, back to back**) **Price: \$5 members only**

Description: Stephen Runkle will present an in-depth study of Native Americans and their life in the Susquehanna River Basin Region during the 17th and 18th centuries. Details about Native American dress, dwellings, travel, occupations of both men and women, hunting and fishing techniques, warfare, government, social structure, religion, medicine, amusements, and recreation will be addressed. Hands-on displays including furs, trade goods, and war clubs will be presented.

Presenter: Stephen Runkle is a volunteer with the Susquehanna River Basin Commission's Public Information and Outreach Program.

WEDNESDAY CLASSES

Town and Country in York County: Past and Present

Wednesdays, 9:00–10:30 a.m. (CC)

February 15 and 22 (**2-session course**) **Price: \$5 members only**

Description: Richard Bono will present the story behind the development of our towns, natural lands, and agriculture. The course will cover the past, present and a projection to a new sustainable future.

Presenter: Richard Bono is an architect with wide and varied interests.

Cheeses of the World

(maximum 20)

Wednesday, 2:00 p.m.–4:00 p.m. (Deli Delicious, Colonial Shopping Center, 966 S. George St.)

February 22 (**single-session course**) **Price: \$5 members/\$10 nonmembers**

Description: Visit Deli Delicious and get a chance to taste and learn about cheeses from all over the world. Sharif Ibrahim will compare domestic and



foreign cheeses, how and why they differ, and the aging process.

Presenter: Sharif Ibrahim has almost twenty-five years of experience as a cheese purveyor and is the owner of the Deli Delicious store. He is also the manager of a stand at Eastern Market, in York.

Marcellus Shale

Wednesday, 9:00–10:30 a.m. (CC)

February 29 (**single-session course**) **Price: \$5 members/\$10 nonmembers**

Description: Marcellus shale natural gas drilling in Pennsylvania poses both promises and risks. This new industry and its impact on the environment, health, communities and the economy of Pennsylvania is a study in progress since impact studies have not been implemented in the Commonwealth. Barbara Rooney will share facts about hydraulic fracturing, the current state of Marcellus Shale drilling, and the impacts experienced. Maps, a resource list, legal and activism aspects will be included.

Presenter: Barbara Rooney has a BSN from Notre Dame of Maryland University in Baltimore. She has developed a keen interest in Marcellus Shale drilling practices.

WEDNESDAY CLASSES

What is a Net-Zero Home?

Wednesday, 9:00–10:30 a.m. (RAB)

March 7 and 16 (**two-session course, the second session will be a field trip to take place on Friday, March 16, 11:00 a.m.–12:30 p.m., more information to be given in class**) Price: \$5 members only

Description: How did the Horowitz's build a net-zero house? What does the house mean to York County? What does the house mean to the environment? A visit to the Horowitz's new net-zero home will be held on March 16, 11:00 a.m. –12:30 p.m.

Presenter: Craig Horowitz is a general contractor, cabinet maker, and builder of passive solar homes.

People of the Book

Wednesdays, 12:45–2:15 p.m. (RAB)

March 7 and 14 (**two-session course**) Price: \$5

Description: Session one will include a PowerPoint presentation which tracks the Sarajevo Haggadah as spoken about in the book's text. There will be a brief discussion and analysis of the text and time will be available for questions and answers. Session two will include a discussion and presentation of the modern Judaism vis a vis Passover and the significance of the modern Haggadah. Symbols of the holiday will be examined as well. Class participants are encouraged to read *People of the Book* by Geraldine Brooks before class begins.

Presenter: Rabbi Jeffrey Astrachan serves the Jewish community of York and surrounding areas and has been the spiritual leader of Temple Beth Israel since 2008.

Ben Franklin: From Beginning to End

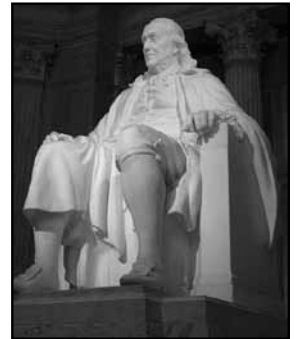
(maximum 26)

Wednesday, 11:00 a.m.–12:30 p.m. (CC)

March 14 (**single-session course**) Price: \$5 members/\$10 nonmembers

Description: Michael Bubb will share interesting facts about Ben Franklin's life, experiments, inventions, and influence on politics. He will be in Franklin garb for the presentation.

Presenter: Michael Bubb is a former teacher and Ben Franklin enthusiast.



The York Fair: Past, Present, Future

Wednesday, 9:00–10:30 a.m. (CC)

March 21 (**single-session course**) Price: \$5 members/\$10 nonmembers

Description: The history of the York Fair will be presented as well as the most recent changes. Class members will be privy to the master plan for the York Fair's future.

Presenter: Mike Froehlich is the general manager of the York Fair.

THURSDAY CLASSES

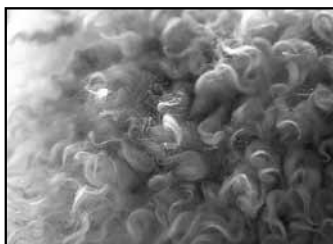
Baa Baa Black Sheep

(maximum 15)

Thursdays, 11:00 a.m.–12:30 p.m. (YAC)

February 16, 23; March 1, 8, 15, and 22 (**six-session course**) Price: \$20 members only

Description: The main project for this course will be to knit either an Elizabeth Zimmerman (EZ) surprise vest or her baby surprise sweater. While we will work on the



EZ project throughout the six sessions, other aspects of working with wool will be featured weeks two through six. A materials list will be sent to you prior to the beginning of the course.

Presenter: Judy Leece is an experienced knitter, spinner, and weaver.

THURSDAY CLASSES

Winter 2012 Book Club

(maximum 20)

Thursdays, 12:45–2:15 p.m. (YAC)

March 1 and 22 (**two-session course, please note that there will not be class on March 8 and 15**)

Price: \$5 members only

Description: A discussion of *Hotel on the Corner of Bitter and Sweet* by Jamie Ford will be led by Pat McGrath on March 1. Henry Lee is a twelve-year-old Chinese boy who falls in love with Keiko Okabe, a twelve-year-old Japanese girl, while they are scholarship students at a prestigious private school in World War II Seattle. This is an old-fashioned historical novel that alternates between the early 1940s and 1984. Readers will care about Henry as he is forced to make decisions and accept circumstances that separate him from both his family and the love of his life.

A discussion of *Sarah's Key* by Tatiana de Rosnay will be led by Rosemary Dill on March 22. Paris, July 1942: Sarah, a ten-year-old girl, is brutally arrested with her family by the French police in the Vel' d'Hiv' roundup, but not before she locks her younger brother in a cupboard in the family's apartment, thinking that she will be back within a few hours. Paris, May 2002: On Vel' d'Hiv's 60th anniversary, journalist Julia Jarmond is asked to write an article about this black day in France's past. Through her contemporary investigation, she stumbles onto a trail of long hidden family secrets that connect her to Sarah. Julia finds herself compelled to retrace the girl's ordeal, from that terrible term in the Vel' d'Hiv', to the camps, and beyond. As she probes into Sarah's past, she begins to question her own place in France, and to reevaluate her marriage and her life.

Presenters: Rosemary Dill is a retired librarian. Pat McGrath is retired from the Girl Scouts of America. Both are avid readers and love to facilitate their book club.

WINTER 2012 SPECIAL EVENTS

Fun and Fancy Appetizers

(maximum 15)

Tuesday, 11:00 a.m.–12:30 p.m. (CC)

February 21 and 28 (**two-session course, second session will take place from 11:00 a.m. to 3:00 p.m. at the Red Brick Bakery, located at 55 N. Main Street, Red Lion, on February 28**) **Price: No OLLI fee, a \$12 fee will be collected at the Red Brick Bakery**

Description: Join Chef Danielle Sanders for an informative session about easy appetizers for entertaining your guests. Learn about simple and unusual ingredients that you can pair with quick techniques to make an impressive hors d'oeuvres display. Follow up the classroom with a demonstration and hands-on session at the Red Brick Bakery.



Presenter: Danielle Sanders is the owner of the Red Brick Bakery in Red Lion.

World War II: The Effect on York County

Wednesdays, 11:00 a.m.–12:30 p.m. (CC, February 22 class will meet at the York Heritage Trust, 250 E. Market Street, at 11:00 a.m.)

February 15, 22, 29; and March 7 (**4-session course**) **Price: \$15 members only (Additional \$4 charge will be collected at the York Heritage Trust)**



Description: James McClure will enlighten us once again with York County's history. This time he will present the effects of World War II on York County. The February 22 class will be a tour of the Front Porch to Front Lines Exhibit at the Historical Society located at 250 East Market Street. There will be an additional \$4 charge collected at the museum.

Presenter: James McClure is the editor of the *York Daily Record*, an author and historian.

ABOUT OSHER LIFELONG LEARNING INSTITUTE AT PENN STATE YORK



THE PULLO CENTER

\$5 discount for all OLLI
members on all Pullo
Center shows.

thepullocenter.com
717-505-8900



*Some shows may not apply, check with Pullo Center Box
Office for details.

Make It Happen!



OLLI will hold its first Founders' Lecture on Thursday, May 17, 2012, at noon at Penn State York. The featured speaker is Emily Kimball, an inspirational presenter, creative aging expert, leisure professional, and avid hiker and cyclist. More details will be available after the holidays.



COFFEE AND CONVERSATION

Meet your fellow members, have free coffee and
snacks.

Tuesday, February 28, 11:00 a.m.-1:00 p.m. (CC)

WINTER 2012 SPECIAL EVENTS

Architectural Tour of Downtown York

Friday, 10:00 a.m. –12:00 p.m.

March 23 (class will meet at the Golden Plough Tavern, 175 West Market Street) Price: \$5 members/\$10 nonmembers

Description: One of York City's most pleasing characteristics is its vast and fascinating array of 18th, 19th, and early 20th-century residential, commercial, religious, and public buildings. The walking tour will encompass the downtown area, beginning at the city's earliest building, the Golden Plough Tavern

on 157 West Market Street and will highlight York's diverse architectural styles and features.

Presenter: Barbara Raid has been an architectural historian with Historic York for twenty-two years.

OLLI Winter 2012 Coffee And Conversation

Tuesday, February 28, 11:00 a.m.–1:00 p.m. (CC)

Meet your fellow members and have free coffee and snacks.

OPPORTUNITIES TO TRAVEL



OLLI is off on a New Track: Ride the Trains of Colorado in August 2012

Everyone should live in the moment; but you need to plan ahead to make those moments spectacular! OLLI is looking ahead toward a spectacle for the travelers in the group. What is not to like about a trip through the Colorado Rockies with a group of friendly cohorts (maybe even spouses!) aboard the trains of the mountains?

Here is what you need to know: The trip will leave from the lower parking lot at Penn State York (on Irving Road) to take you to Harrisburg to fly to Denver to meet the trains. You will spend two nights in each hotel until the ninth day when your tour ends. The price of the tour includes airfare, some meals, hotels, extra activities, and transportation to and from the Penn State York parking lot. **Sign-up by February 24, 2012, and save \$100 on the cost of the trip! An additional OLLI bonus for signing up to go on the trip is a free membership for the next year for either new or current members! Can you beat it?**

up to go on the trip is a free membership for the next year for either new or current members! Can you beat it?

For more information or to RSVP, please call the OLLI Office at 717-771-4015 or 717-771-4107.



Trains of the Colorado Rockies: August 24-September 1, 2012

Book by Friday, February 24, 2012

- Double \$2,519
- Single \$3,119
- Triple \$2,489

If booked after Friday, February 24, 2012

- Double \$2,619
- Single \$3,219
- Triple \$2,589

OSHER LIFELONG LEARNING INSTITUTE WINTER 2012 COURSE REGISTRATION FORM

Name: _____ E-mail address: _____

Street Address: _____ Please check here to give us permission to use your e-mail address for OLLI communications:

City, State, Zip: _____ Phone Number: _____

Emergency contact person and phone #: _____

Winter 2012 registration deadline: February 3, 2012

Please place an X in the box next to course name to register for that course.

Courses	Price	Courses, continued	Price
<input type="checkbox"/> Advanced Genealogy 12:45-2:15 p.m.; March 5 10:00 a.m.-12:00 p.m.; March 9	\$5, members only	<input type="checkbox"/> The Hills are Alive with the Sound of Music 9:00-10:30 a.m.; February 13, 20, 27; March 5	\$15, members only
<input type="checkbox"/> America through the Decades: The Top 10 3:30-5:00 p.m.; February 13, 20, 27; March 5, 12, 19	\$20, members only	<input type="checkbox"/> How to Tell a Secret 2:30-4:00 p.m.; March 19	\$5 members/\$10 nonmembers
<input type="checkbox"/> Baa Baa Black Sheep 11:00 a.m.-12:30 p.m.; February 16, 23; March 1, 8, 15, 22	\$20, members only	<input type="checkbox"/> Human Trafficking in York: Then and Now 9:00-10:30 a.m.; February 14	\$5 members/\$10 nonmembers
<input type="checkbox"/> Ben Franklin: From Beginning to End 11:00 a.m.-12:30 p.m.; March 14	\$5 members/\$10 nonmembers	<input type="checkbox"/> Introduction to Genealogy 12:45-2:15 p.m.; February 20; and 10:00 a.m.-12:00 p.m.; February 24	\$5, members only
<input type="checkbox"/> Bridges of Wrightsville: Confederate Army Comes... 12:45-2:15 p.m.; February 13	\$5 members/\$10 nonmembers	<input type="checkbox"/> Investment Market Update 2:30-4:00 p.m.; February 13, 27, and March 12	\$15, members only
<input type="checkbox"/> Cheeses of the World 2:00-4:00 p.m.; February 22	\$5 members/\$10 nonmembers	<input type="checkbox"/> Marcellus Shale 9:00-10:30 a.m.; February 29	\$5 members/\$10 nonmembers
<input type="checkbox"/> A Chemical Reaction 2:30-5:00 p.m.; March 5	\$5 members/\$10 nonmembers	<input type="checkbox"/> Mistresses: The Girls of the Boys in the Fascist Era 12:45-2:15 p.m.; February 14, 21, 28; and March 6, 13, 20	\$20, members only
<input type="checkbox"/> Crime Prevention Strategies 9:00-10:30 a.m.; March 12	\$5 members/\$10 nonmembers	<input type="checkbox"/> Modern Media Ethics Revisited 11:00 a.m.-12:30 p.m.; March 19	\$5 members/\$10 nonmembers
<input type="checkbox"/> Culture and Diversity in Perspective 2:30-4:00 p.m.; March 6	\$5 members/\$10 nonmembers	<input type="checkbox"/> Native American Life in the Susquehanna River... 12:45-4:00 p.m.; March 20	\$5, members only
<input type="checkbox"/> Factory Whistles of York 12:45-2:15 p.m.; March 19	\$5 members/\$10 nonmembers	<input type="checkbox"/> New Days for Codorus Creek 2:30-4:00 p.m.; February 20	\$5 members/\$10 nonmembers
<input type="checkbox"/> Geology of Colorado 11:00 a.m.-12:30 p.m.; February 13, 20, 27	\$15, members only	<input type="checkbox"/> Pennsylvania Birding 101 9:00-10:30 a.m.; February 28; and field trip on March 2	\$5, members only
<input type="checkbox"/> Green is the Color of Life and Health 12:45-2:15 p.m.; March 12	\$5 members/\$10 nonmembers	<input type="checkbox"/> People of the Book 12:45-2:15 p.m.; March 7, 14	\$5, members only

OSHER LIFELONG LEARNING INSTITUTE WINTER 2012 COURSE REGISTRATION FORM

Courses	Price	Courses, continued	Price
<input type="checkbox"/> Preparing for Disaster 11:00 a.m.-12:30 p.m.; March 5	\$5 members/\$10 nonmembers	<input type="checkbox"/> Wanderings, Water, and Wild Places 12:45-2:15 p.m.; February 27	\$5 members/\$10 nonmembers
<input type="checkbox"/> Psychology of the Criminal Mind 11:00 a.m.-12:30 p.m.; March 6, and 13	\$5, members only	<input type="checkbox"/> WellSpan's New Surgery and Rehabilitation Hosp. 9:00-10:30 a.m.; March 6	\$5 members/\$10 nonmembers
<input type="checkbox"/> The Second Vermont Brigade 11:00 a.m.-12:30 p.m.; March 12	\$5 members/\$10 nonmembers	<input type="checkbox"/> What is a Net-Zero Home? 9:00-10:30 a.m.; March 7 and field trip 11:00 a.m.-12:30 p.m.; March 16	\$5, members only
<input type="checkbox"/> The Secret War in Laos: How Did Mags Really Die? 9:00-10:30 a.m.; March 13, and 20	\$5, members only	<input type="checkbox"/> Why all this Wild Weather? 2:30-4:00 p.m.; February 21	\$5 members/\$10 nonmembers
<input type="checkbox"/> Spooky York 11:00 a.m.-12:30 p.m.; February 14	\$5 members/\$10 nonmembers	<input type="checkbox"/> Winter 2012 Book Club 12:45-2:15 p.m.; March 1, and 22	\$5, members only
<input type="checkbox"/> Steig Larson's Millennium Trilogy 2:30-5:00 p.m.; February 14, 28; and March 13	\$15, members only	<input type="checkbox"/> The York Fair: Past, Present, Future 9:00-10:30 a.m.; March 21	\$5 members/\$10 nonmembers
<input type="checkbox"/> Town and Country in York County 9:00-10:30 a.m.; February 15, and 22	\$5, members only		

Special Events	Price
<input type="checkbox"/> Architectural Tour of Downtown York 10:00 a.m.-12:00 p.m.; March 23	\$5 members/\$10 nonmembers
<input type="checkbox"/> Fun and Fancy Appetizers 11:00 a.m.-12:30 p.m.; February 21 and 11:00 a.m.-3:00 p.m.; February 28	No OLLI fee, \$12 to be collected at the Red Brick Bakery
<input type="checkbox"/> World War II: The Effect on York County 11:00 a.m.-12:30 p.m.; February 15, 29; and March 7; and 11:00 a.m. on February 22	\$15, members only, additional fee of \$4 to be collected at York Heritage Trust

Membership: \$50/one year <input type="checkbox"/> New <input type="checkbox"/> Renewal <i>(please check one)</i>	\$	
Please make checks payable to: PENN STATE	Total fee for courses	\$
	Donation to OLLI	\$
	TOTAL PAYMENT	\$

Return registration form to:

OLLI at Penn State York,
1031 Edgecomb Avenue,
York, PA 17403

Extra registration forms are available by calling 717-771-4015 or by visiting the website at olli.yk.psu.edu.

OSHER LIFELONG LEARNING INSTITUTE FALL 2012 COURSE SCHEDULE

MONDAY	MONDAY (continued)	TUESDAY	WEDNESDAY	THURSDAY
<p>The Hills are Alive with the Sound of Music - 9:00–10:30 a.m.; February 13, 20, 27; and March 5; CC</p> <p>Geology of Colorado - 11:00 a.m.–12:30 p.m.; February 13, 20, and 27; CC</p> <p>Bridges of Wrightsville - 12:45–2:15 p.m.; February 13, CC</p> <p>Investment Market Update - 2:30–4:00 p.m.; February 13, 27; and March 12; CC</p> <p>America through the Decades - 3:30–5:00 p.m.; February 13, 20, 27; March 5, 12, and 19; CC</p> <p>Introduction to Genealogy - 12:45–2:15 p.m.; February 20 CC and 10:00 a.m.–12:00 p.m.; Friday, February 24 (York Heritage Trust Library, 250 E. Market Street)</p> <p>New Days for Codorus Creek - 2:30–4:00 p.m.; February 20; CC</p> <p>Wanderings, Water, and Wild Places - 12:45–2:15 p.m.; February 27; CC</p> <p>Preparing for Disaster - 11:00 a.m.–12:30 p.m.; March 5; RAB</p> <p>Advanced Genealogy - 12:45–2:15 p.m.; March 5 RAB and 10:00 a.m.–12:00 p.m.; Friday, March 9 (York Heritage Trust Library, 250 E. Market Street)</p>	<p>A Chemical Reaction - 2:30–5:00 p.m.; March 5; RAB</p> <p>Crime Prevention Strategies - 9:00–10:30 a.m.; March 12; CC7; RAB</p> <p>The Second Vermont Brigade - 11:00 a.m.–12:30 p.m.; March 12; CC</p> <p>Green is the Color of Life and Health - 12:45–2:15 p.m.; March 12 CC</p> <p>Modern Media Ethics Revisited - 11:00 a.m.–12:30 p.m.; March 19; CC</p> <p>Factory Whistles of York - 12:45–2:15 p.m.; March 19; CC</p> <p>How to Tell a Secret - 2:30–4:00 p.m.; March 19; CC</p>	<p>Human Trafficking in York - 9:00–10:30 a.m.; February 14; CC</p> <p>Spooky York - 11:00 a.m.–12:30 p.m.; February 14; CC</p> <p>Mistresses - 12:45–2:15 p.m.; February 14, 21, 28; March 6, 13, and 20; CC</p> <p>Stieg Larson's Millennium Trilogy - 2:30–5:00 p.m.; February 14, 28; March 13; CC</p> <p>Why all this Wild Weather? - 2:30–4:00 p.m.; February 21; CC</p> <p>Pennsylvania Birding 101 - 9:00–10:30 a.m.; February 28 CC ; and field trip Friday, March 2</p> <p>WellSpan's New Surgery and Rehabilitation Hospital - 9:00–10:30 a.m.; March 6; RAB</p> <p>Psychology of the Criminal Mind - 11:00 a.m.–12:30 p.m.; March 6 and 13; RAB</p> <p>Culture and Diversity in Perspective - 2:30–4:00 p.m.; March 6; RAB</p> <p>The Secret War in Laos - 9:00 – 10:30 a.m.; March 13 and 20; CC</p> <p>Native American Life in the Susquehanna River Basin Region - 12:45–4:00 p.m.; March 20; CC</p> <p>Special Event Fun and Fancy Appetizers - 11:00 a.m.–12:30 p.m.; February 21 CC and 11:00 a.m.–3:00 p.m.; February 28 (Red Brick Bakery, 55 N. Main Street, Red Lion)</p>	<p>Town and Country in York County - 9:00–10:30 a.m.; February 15 and 22; CC</p> <p>Cheeses of the World - 2:00–4:00 p.m.; February 22; Deli Delicious, Colonial Shopping Center, 966 S. George Street</p> <p>Marcellus Shale - 9:00–10:30 a.m.; February 29; CC</p> <p>What is a Net-Zero Home? - 9:00–10:30 a.m.; March 7 RAB; and field trip 11:00 a.m.–12:30 p.m.; Friday, March 16</p> <p>People of the Book - 12:45–2:15 p.m.; March 7 and 14; RAB</p> <p>Ben Franklin: From Beginning to End - 11:00 a.m.–12:30 p.m.; March 14; CC</p> <p>The York Fair - 9:00–10:30 a.m.; March 21; CC</p> <p>Special Event World War II - 11:00 a.m.–12:30 p.m.; February 15, 29; and March 7 CC and 11:00 a.m. on February 22 (York Heritage Trust, 250 E. Market Street)</p>	<p>Baa Baa Black Sheep - 11:00 a.m.–12:30 p.m.; February 16, 23; March 1, 8, 15, and 22; YAC</p> <p>Winter 2012 Book Club - 12:45–2:15 p.m.; March 1 and 22; YAC</p> <p>Special Event Architectural Tour of Downtown York - 10:00 a.m.–12:00 p.m.; March 23; Class will meet at the Golden Plough Tavern, 175 W. Market Street</p>
<p>Inclement Weather Policy If Penn State York has a delay or canceled classes, OLLI classes will be canceled. Please check radio station WSBA, TV station WGAL 8, or the Penn State York website for cancellations.</p>				
<p>CLASS LOCATIONS: CC – Penn State York Conference Center RAB – John J. Romano Administration Building MCB – Main Classroom Building PAC – Pullo Family Performing Arts Center YAC – York Alliance Church (501 Rathton Road, York, PA 17403)</p>				
<p>OLLI Coffee and Conversation Tuesday, February 28 11:00 a.m.–1:00 p.m. CC</p>				

OLLI at Penn State York
1031 Edgecomb Avenue
York, PA 17403

Nonprofit Org.
U.S. Postage
PAID
York, PA
Permit #1163

OLLI

2012 WINTER CATALOG

Stretch your mind. Explore a new interest. Discover new ways to enjoy life with people who love to learn, just like you.

Learning for Life

Penn State is committed to affirmative action, equal opportunity, and the diversity of its workforce. U.Ed. 0YK 12-83



2012 Winter Courses and Activities

February 13–
March 23, 2012

